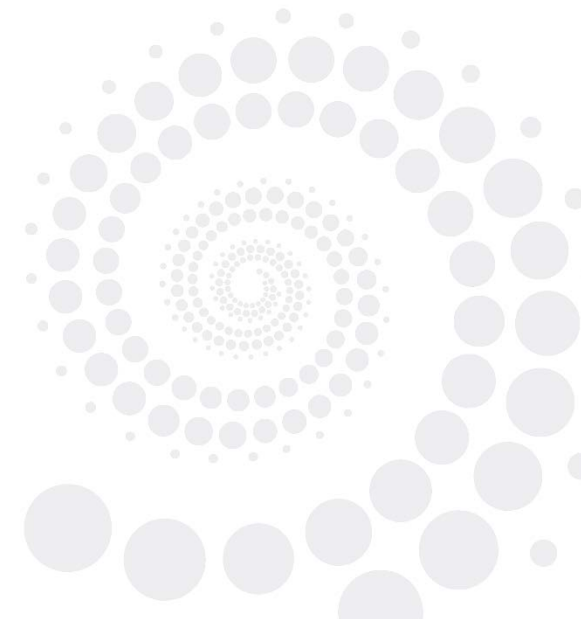


*The use of the
Washington Group
Short Set in New
Zealand*



Disability data in New Zealand and the Disability Survey



Overview

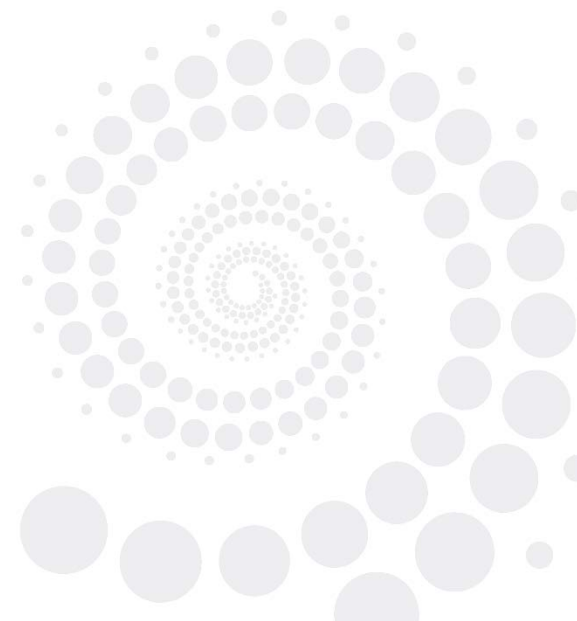
1. Current uses of the Washington Group Short Set (WGSS) in New Zealand
2. How the WGSS results compare across surveys
3. Future uses of the WGSS in New Zealand



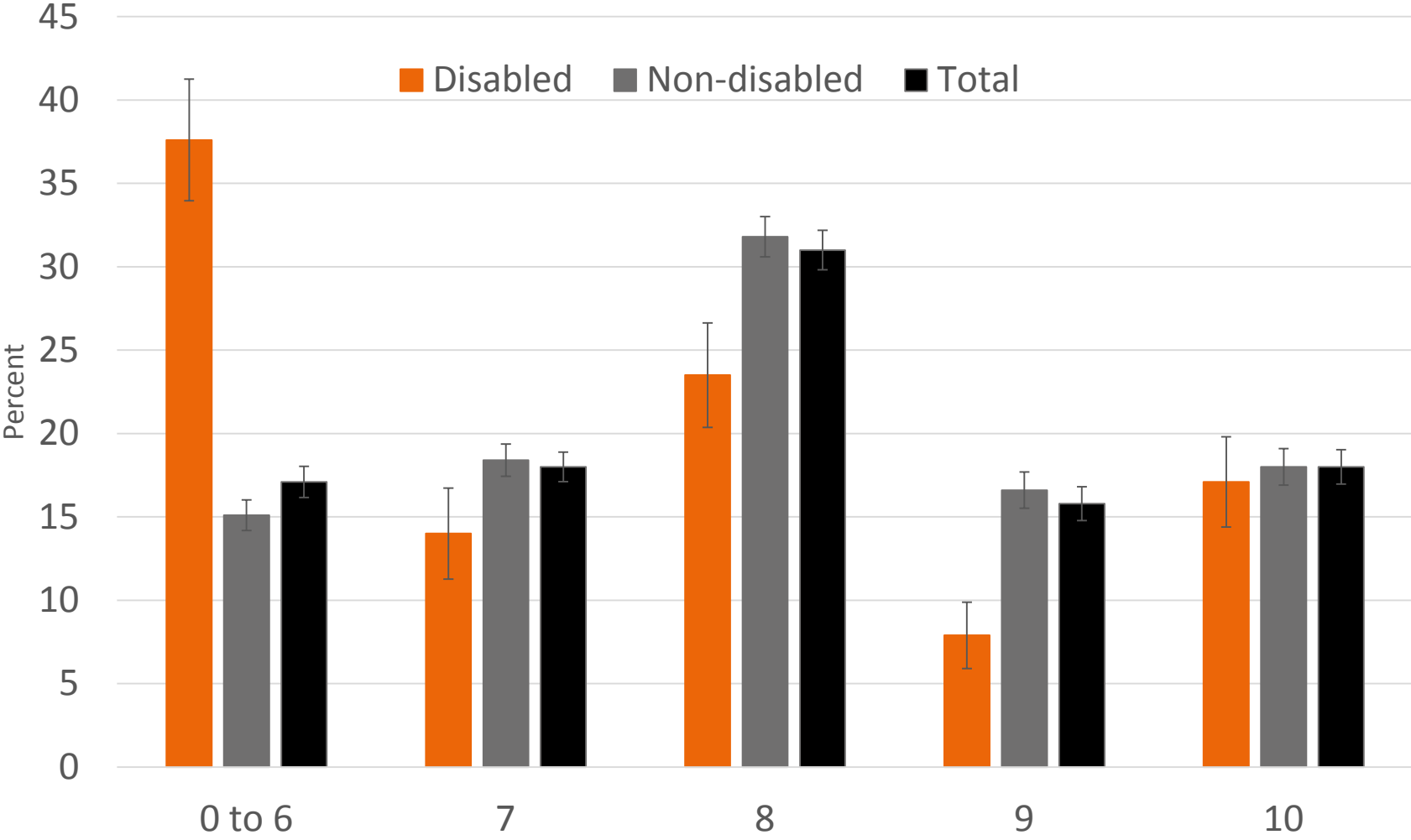
New Zealand General Social Survey 2016/17

Topics include:

- Subjective well-being
- Health
- Safety and security
- Economic standard of living
- Housing
- Social connectedness
- Trust and human rights



Overall Life Satisfaction (OLS)- GSS

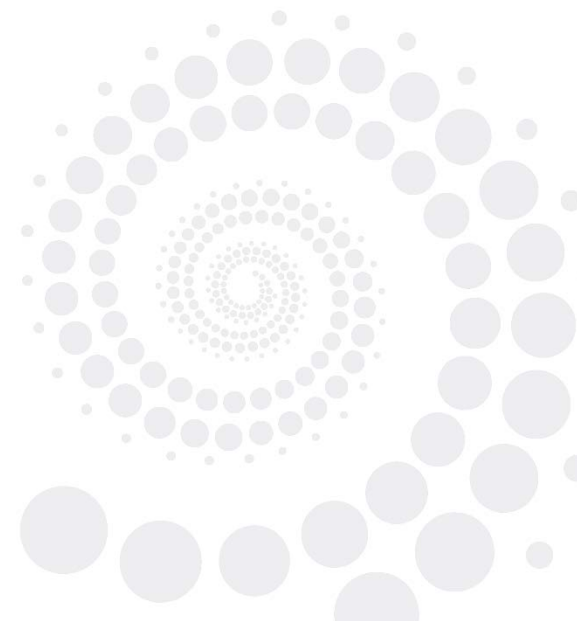


Household Labour Force Survey (HLFS)

June 2017

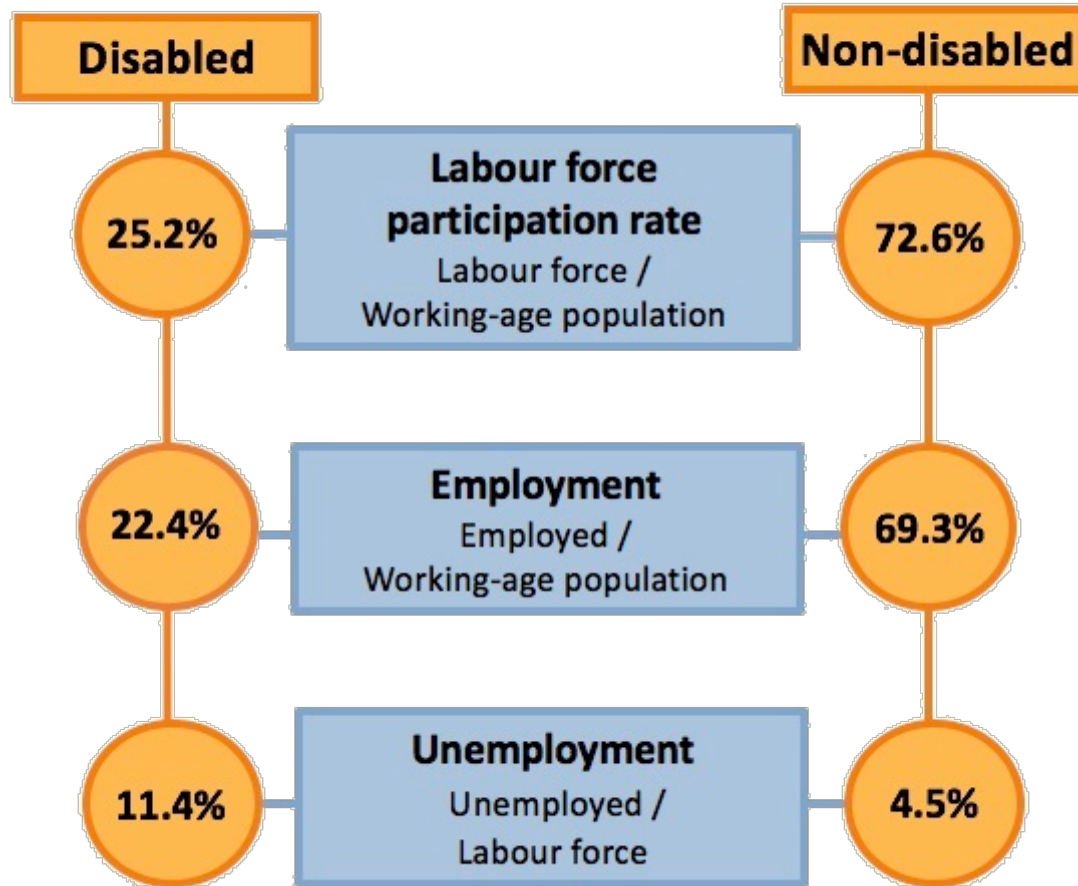
Topics include:

- **Employment;**
Including industry, occupation, region, hours worked, type of employment arrangements
- **Unemployment;**
including region, duration of unemployment
- **Those not in the labour force;**
including main activity and youth
- **Earnings**



Key disability results from the HLFS

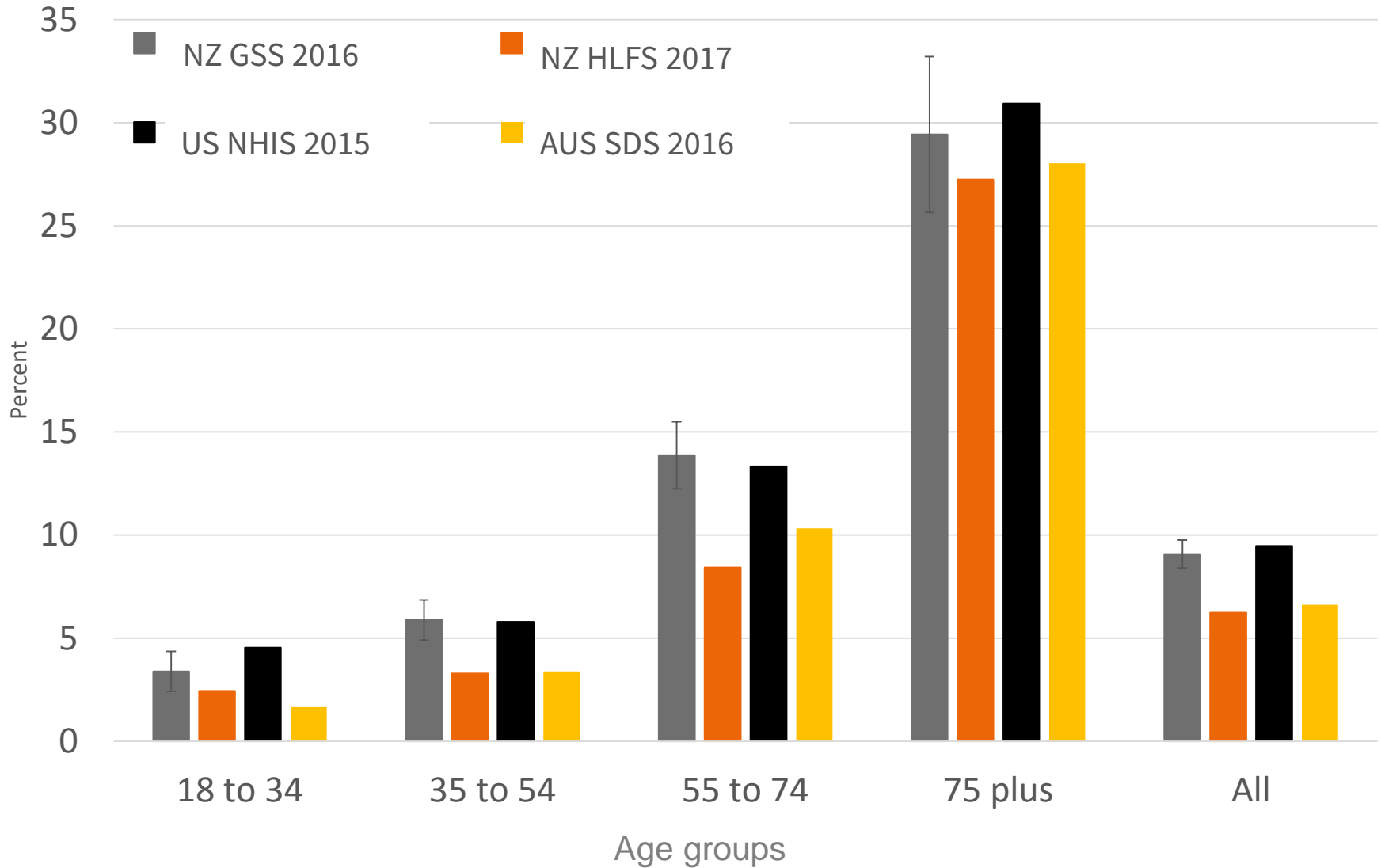
Labour market rates by disability status June 2017 quarter



Comparing the WGSS across surveys

- The New Zealand General Social Survey
- The Household Labour Force Survey
- The Australian Supplementary Disability Survey (SDS)
- The American National Health Interview Survey (NHIS)

WGSS disability rates by age-group



Future uses of Washington Group Short Set in New Zealand

Other government agencies

- Ministry of Justice: Crime and Victims Survey (2018)
- Ministry of Health: NZ Health Survey (2018/19)

Stats NZ

- New Zealand Census 2018
- Te Kupenga 2018 (Survey of Māori Well-being)
- Integrated Data Infrastructure (IDI)

22 This question is about difficulties you may have doing certain activities because of a **health problem**.

Do you have difficulty with any of the following:

- seeing, even if wearing glasses?

- no difficulty
- some difficulty
- a lot of difficulty
- cannot do at all

- hearing, even if using a hearing aid?

- no difficulty
- some difficulty
- a lot of difficulty
- cannot do at all

- walking or climbing steps?

- no difficulty
- some difficulty
- a lot of difficulty
- cannot do at all

- remembering or concentrating?

- no difficulty
- some difficulty
- a lot of difficulty
- cannot do at all

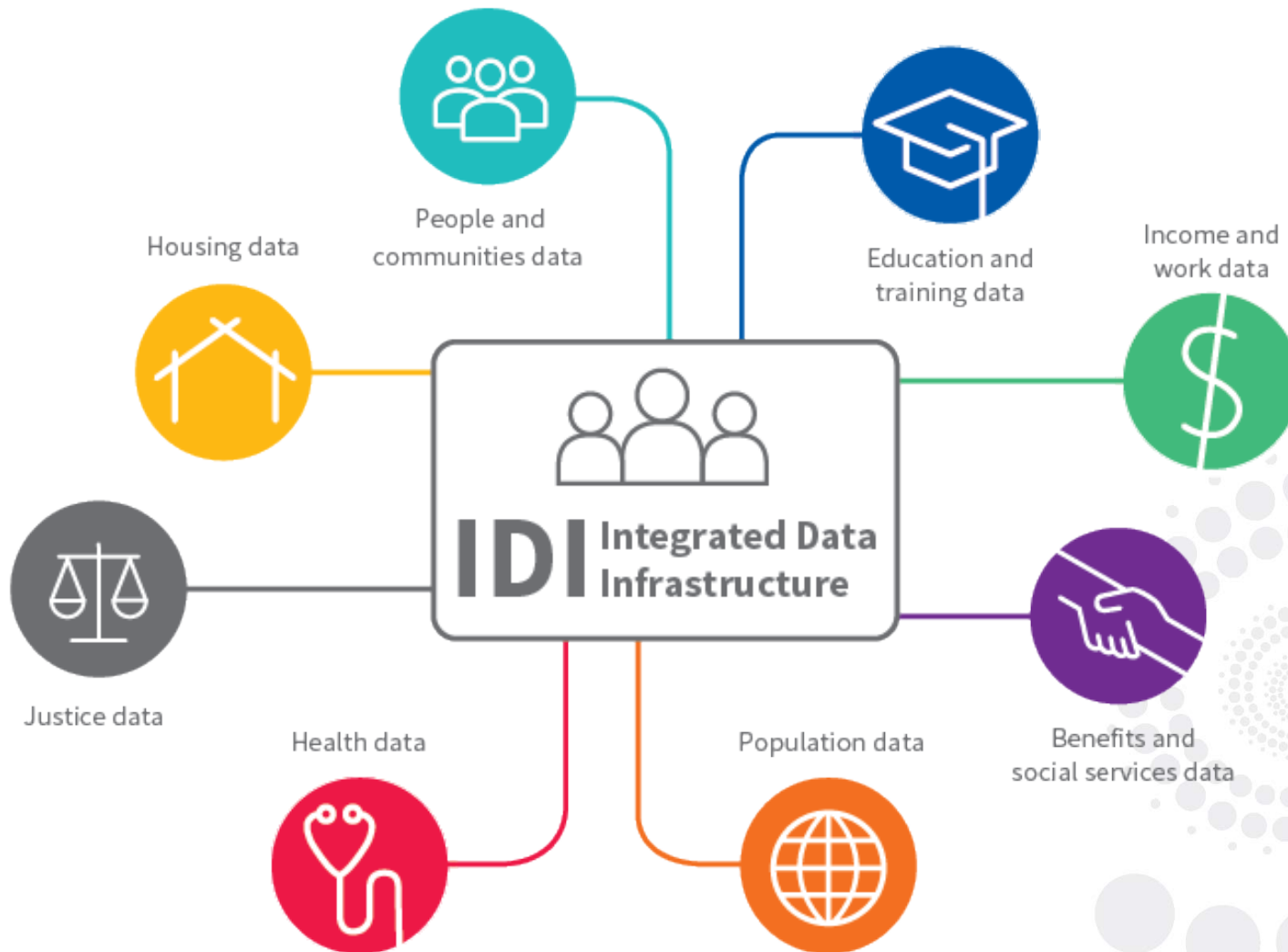
- washing all over or dressing?

- no difficulty
- some difficulty
- a lot of difficulty
- cannot do at all

- communicating using your usual language, for example understanding or being understood by others?

- no difficulty
- some difficulty
- a lot of difficulty
- cannot do at all

Integrated data infrastructure (IDI)



Thank you.

